

key= F

Plastic Love

(Mariya Takeuchi key)

Intro

Gm7 C7^(b9) Am7 Dm7

A

Gm7 C7^(b9) Am7 Dm7

Gm7 C7^(b9) Am7 Dm7

Gm7 E7^b Dm7 G7

Gm7 C7^(b9) Dm7

①

② C E F D7^(b9)

B

B^b_Δ7 C6 B^b_Δ7 C6

Em^(b5) A7^{aug} Dm7 B^b C6 Am7 Dm7

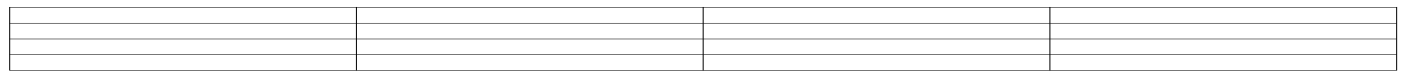
B^b_Δ7 C6 B^b_Δ7 C6

B^b_Δ7 Am7 D

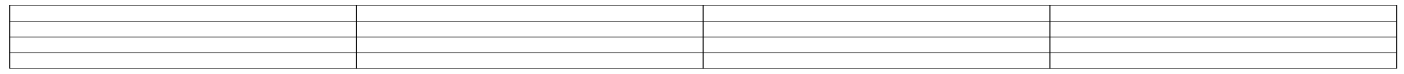
to

Solo

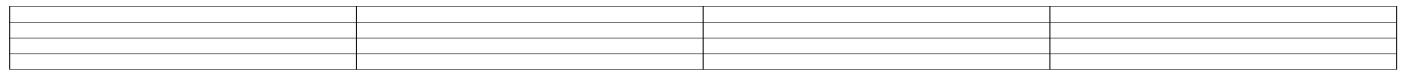
Gm7 E7^b Dm7 G7



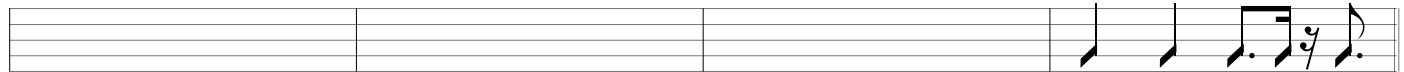
Gm7 C7^(b9) Am7 Dm7



Gm7 E7^b Dm7 G7



Gm7 C7^(b9) Dm7 Dm7 $\overset{C}{E}$ F D7^(b9)

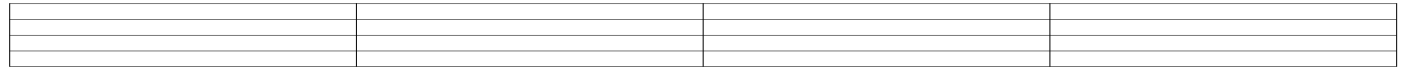


D.S.

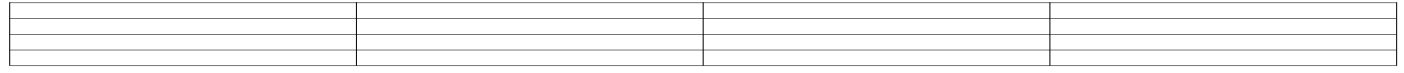
C O D A

A'

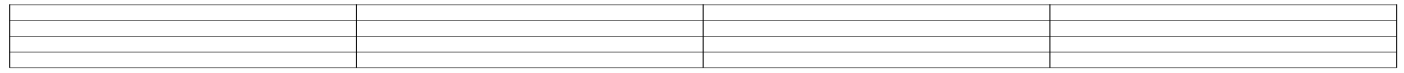
Gm7 C7^(b9) Am7 Dm7



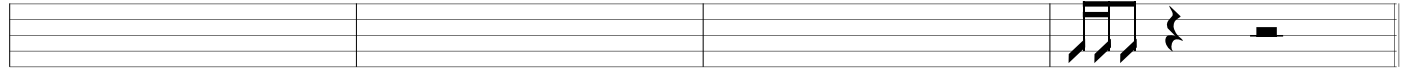
Gm7 C7^(b9) Am7 Dm7



Gm7 E7^b Dm7 G7



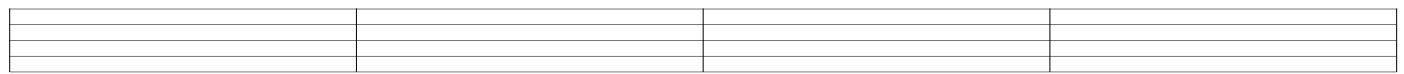
Gm7 C7^(b9) Dm7



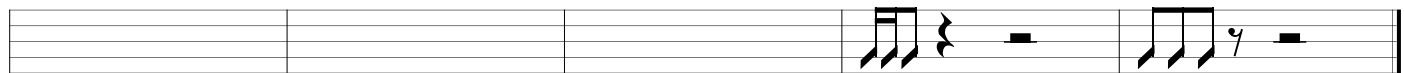
End

Gm7 C7^(b9) Am7 Dm7
(~ 4 x times Repeat ~)

Gm7 E7^b Dm7 G7



Gm7 C7^(b9) Dm7



rit.

Fine